

Shown from left to right: BRD-2510, BRD-96, BRD-256, BRD-41, BRD-166



High Precision and High Cycle Performance



Speed Chart

See the Enerpac Cylinder Speed Chart in our 'Yellow Pages' to determine your approximate cylinder speed.

Page: 103



Golden Ring Design

Enerpac BRD-Cylinders are provided with the Golden Ring Design, for long, trouble-free performance.

- Designed for long life, the best choice for production applications
- Unique mounting configurations simplify fixturing
- Baked enamel finish for increased corrosion resistance
- Double-acting operation develops force in both directions, providing maximum versatility
- Plunger wiper reduces contamination, extending cylinder life
- Imperial models (RD-series) available on request

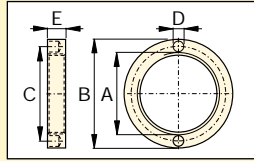


This paper mill uses BRD cylinders for precision when trimming. E

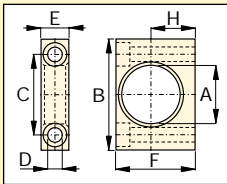
| Cylinder Capacity (ton) | Stroke (mm) | Model Number | Max. Cylinder Capacity (kN) | | Cylinder Effective Area (cm ²) | | Oil Capacity (cm ³) | | Coll. Height | Ext. Height | Body Length | Out. Dia. | Cyl. Bore Dia. | Plgr. Dia. |
|----------------------------|----------------|--------------|--------------------------------|---------|---|---------|------------------------------------|---------|--------------|-------------|-------------|-----------|----------------|------------|
| | | | Advance | Retract | Advance | Retract | Advance | Retract | A (mm) | B (mm) | C (mm) | D (mm) | E (mm) | F (mm) |
| | | | | | | | | | | | | | | |
| 4 | 28 | BRD-41 | 35 | 16 | 5,1 | 2,2 | 14 | 6 | 186 | 214 | 162 | 50 | 25,4 | 19,0 |
| | 79 | BRD-43 | 35 | 16 | 5,1 | 2,2 | 40 | 17 | 237 | 316 | 213 | 50 | 25,4 | 19,0 |
| | 155 | BRD-46 | 35 | 16 | 5,1 | 2,2 | 79 | 34 | 313 | 468 | 289 | 50 | 25,4 | 19,0 |
| 8 | 28 | BRD-91 | 80 | 44 | 11,4 | 6,3 | 32 | 18 | 223 | 251 | 198 | 65 | 38,1 | 25,4 |
| | 79 | BRD-93 | 80 | 44 | 11,4 | 6,3 | 90 | 50 | 274 | 353 | 249 | 65 | 38,1 | 25,4 |
| | 155 | BRD-96 | 80 | 44 | 11,4 | 6,3 | 177 | 98 | 350 | 505 | 325 | 65 | 38,1 | 25,4 |
| | 257 | BRD-910 | 80 | 44 | 11,4 | 6,3 | 293 | 162 | 452 | 709 | 427 | 65 | 38,1 | 25,4 |
| 15 | 159 | BRD-166 | 142 | 77 | 20,3 | 10,6 | 323 | 169 | 389 | 548 | 359 | 80 | 50,8 | 35,0 |
| | 260 | BRD-1610 | 142 | 77 | 20,3 | 10,6 | 528 | 276 | 491 | 751 | 461 | 80 | 50,8 | 35,0 |
| 23 | 159 | BRD-256 | 222 | 98 | 31,7 | 13,7 | 504 | 218 | 424 | 583 | 397 | 92 | 63,5 | 47,8 |
| | 260 | BRD-2510 | 222 | 98 | 31,7 | 13,7 | 824 | 356 | 526 | 786 | 499 | 92 | 63,5 | 47,8 |

Double-Acting, Precision Production Cylinders

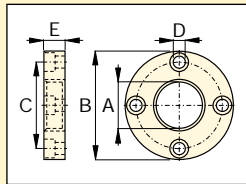
H BRD CYLINDER ATTACHMENTS



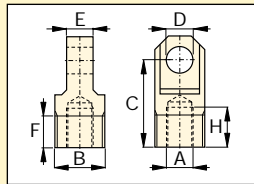
Retainer Nut
For locking foot or flange mountings. Tightens onto cylinder collar threads (Included with foot and flange mounting kits).



Foot Mounting
Mounts onto cylinder collar.



Flange Mounting
Mounts onto cylinder collar.



Clevis Eye
Threads onto plunger or into cylinder base.

| Model Number | BRD-Cyl. (ton) | Dimensions (mm) | | | | | | |
|--|----------------|-----------------|-----------|-------|------|------|-------|------|
| | | A | B | C | D | E | F | H |
| Foot Mounting with Retainer Nut | | | | | | | | |
| BAD-141 | 4 | 42,1 | 80 | 58,0 | 10,5 | 20,0 | 57,0 | 31,8 |
| BAD-171 | 8 | 56,1 | 105 | 78,0 | 13,5 | 25,0 | 82,5 | 44,5 |
| BAD-181 | 15 | 70,1 | 127 | 95,2 | 20,0 | 35,0 | 100,0 | 52,4 |
| BAD-191 | 23 | 85,1 | 159 | 117,5 | 26,5 | 45,0 | 125,0 | 63,5 |
| Flange Mounting with Retainer Nut | | | | | | | | |
| BAD-142 | 4 | 42,1 | 98,4 | 78,6 | 11,0 | 19,0 | - | - |
| BAD-172 | 8 | 56,1 | 121 | 98,4 | 11,0 | 25,4 | - | - |
| BAD-182 | 15 | 70,1 | 143 | 115,9 | 16,0 | 35,0 | - | - |
| BAD-192 | 23 | 85,1 | 159 | 135,7 | 17,0 | 44,5 | - | - |
| Retainer Nut | | | | | | | | |
| BAD-143 | 4 | M42 x 1,5 | 57 | 49,5 | 6,3 | 9,5 | - | - |
| BAD-173 | 8 | M56 x 2 | 75 | 65,5 | 6,7 | 12,7 | - | - |
| BAD-183 | 15 | M70 x 2 | 92 | 81,0 | 6,7 | 19,0 | - | - |
| BAD-193 | 23 | M85 x 2 | 108 | 96,5 | 6,7 | 25,4 | - | - |
| Clevis Eye | | | | | | | | |
| BAD-150 | 4 | M16 x 1,5 | M30 x 1,5 | 52,4 | 16,0 | 15,9 | 19,1 | 23,8 |
| BAD-151 | 8 | M22 x 1,5 | M42 x 1,5 | 57,1 | 20,0 | 25,4 | 25,4 | 23,8 |
| BAD-152 | 15 | M30 x 1,5 | M56 x 2 | 77,8 | 25,0 | 31,8 | 25,4 | 30,2 |
| BAD-153 | 23 | M42 x 1,5 | M70 x 2 | 77,8 | 32,0 | 38,2 | 25,4 | 27,0 |

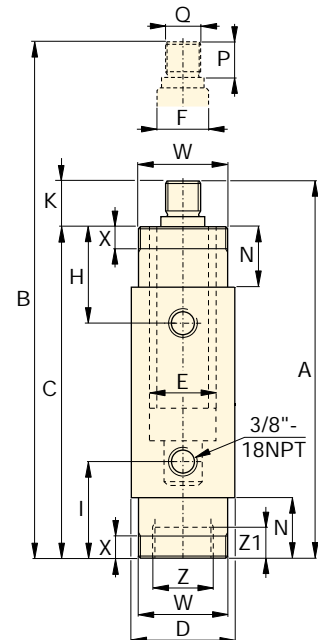
BRD Series



Capacity:
4-23 ton

Stroke:
28-260 mm

Maximum Operating Pressure:
700 bar



| Top to Retract Port H (mm) | Bottom to Advance Port I (mm) | Plunger Protrusion K (mm) | Neck Length N (mm) | Plunger Thread Length P (mm) | Plunger External Thread Q (mm) | Cylinder Mounting Dimensions (mm) | | | | Model Number | |
|----------------------------|-------------------------------|---------------------------|--------------------|------------------------------|--------------------------------|-----------------------------------|------------------------|--------------------|----------------------------|--------------|----------|
| | | | | | | Collar Thread W | Collar Thread Length X | Int. Base Thread Z | Int. Base Thread Length Z1 | | |
| 47 | 47 | 24 | 29 | 22 | M16 x 1,5 | M42 x 1,5 | 11 | M30 x 1,5 | 9 | 2,0 | BRD-41 |
| 47 | 47 | 24 | 29 | 22 | M16 x 1,5 | M42 x 1,5 | 11 | M30 x 1,5 | 9 | 2,6 | BRD-43 |
| 47 | 47 | 24 | 29 | 22 | M16 x 1,5 | M42 x 1,5 | 11 | M30 x 1,5 | 9 | 3,6 | BRD-46 |
| 57 | 57 | 25 | 38 | 22 | M22 x 1,5 | M56 x 2 | 14 | M42 x 1,5 | 14 | 3,0 | BRD-91 |
| 57 | 57 | 25 | 38 | 22 | M22 x 1,5 | M56 x 2 | 14 | M42 x 1,5 | 14 | 4,2 | BRD-93 |
| 57 | 57 | 25 | 38 | 22 | M22 x 1,5 | M56 x 2 | 14 | M42 x 1,5 | 14 | 5,6 | BRD-96 |
| 57 | 57 | 25 | 38 | 22 | M22 x 1,5 | M56 x 2 | 14 | M42 x 1,5 | 14 | 7,3 | BRD-910 |
| 73 | 73 | 30 | 54 | 28 | M30 x 1,5 | M70 x 2 | 22 | M56 x 2 | 24 | 10,2 | BRD-166 |
| 73 | 73 | 30 | 54 | 28 | M30 x 1,5 | M70 x 2 | 22 | M56 x 2 | 24 | 14,5 | BRD-1610 |
| 89 | 89 | 27 | 70 | 25 | M42 x 1,5 | M85 x 2 | 29 | M70 x 2 | 26 | 16,0 | BRD-256 |
| 89 | 89 | 27 | 70 | 25 | M42 x 1,5 | M85 x 2 | 29 | M70 x 2 | 26 | 20,3 | BRD-2510 |